



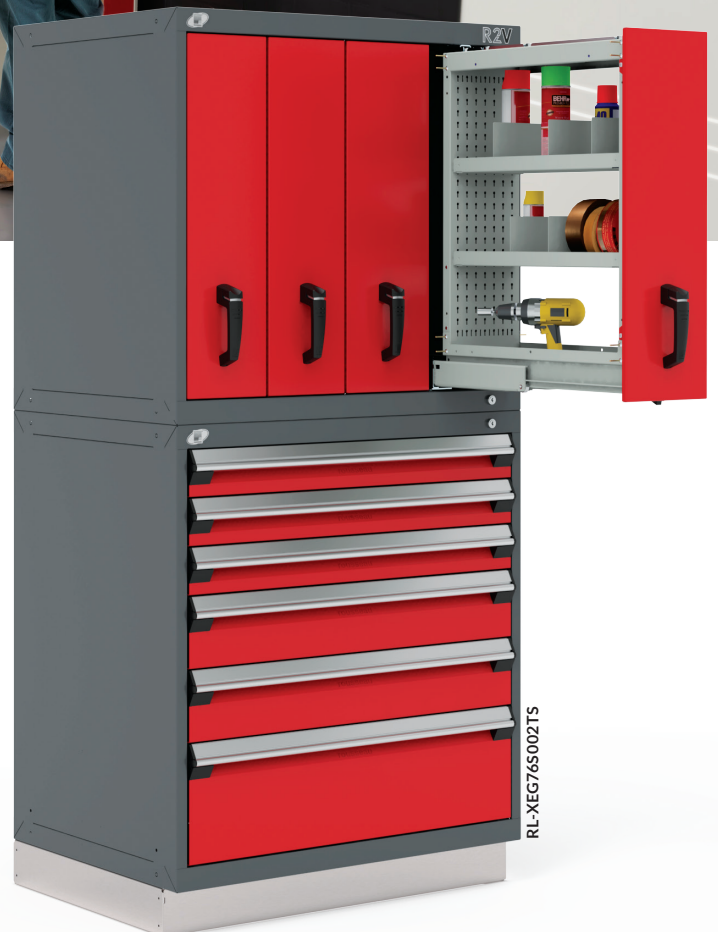
# R2V VERTICAL STORAGE



## DISTINCTIVE FEATURES

- Well-organized storage makes it easier to locate items
- Reclaims floor space by making use of vertical space
- Ergonomic and secure design
- Drawers open to maximum extension for easy access to contents
- Compatible with a range of 5S accessories
- 200lb. capacity per drawer
- Made in North America

APPROACH STORAGE  
FROM ANOTHER ANGLE



RL-XEG76S002TS

# R2V VERTICAL STORAGE

## IDEAL FOR A RANGE OF ENVIRONMENTS

### INTEGRATES INTO THE OVERALL STORAGE SYSTEM



Designed to be stacked on top of an R cabinet, R2V Vertical Storage helps you to maximize use of the vertical space you have available. The drawers open to maximum extension, which eliminates the hard-to-reach areas found in traditional shelf storage and ensures you have full access to the contents. R2V Vertical Storage is a unique system. It stands above the rest for its impressive durability, reliability and versatility.

### WELL-ORGANIZED STORAGE, ALWAYS WITHIN EASY REACH

To help management of your inventory, a range of 5S accessories are available: utility panels, trays, magnetic dividers, shelves and hooks.

By adding the optional two-user access to the cabinet, you can have separate access for two employees in the same cabinet.

With R2V, you benefit from efficiency gains and increased storage capacity while using your floor space to its full potential.

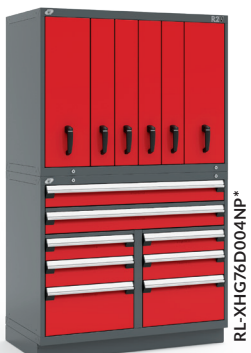
### HIGH-DENSITY AND ACCESSIBLE STORAGE



### EFFICIENT 5S ORGANIZATION



## MULTIPLE CONFIGURATIONS



\* This model includes two-user access (R2V and R cabinets).

**SPECIFICATIONS**



200lb./drawer  
100% extension



6", 7", 8", 9", 10",  
11", 12"



24", 30", 36", 42"\*  
48", 54", 60"



24", 27"



30", 34", 38"

\*For the automotive market

**DRAWER INTERIOR**

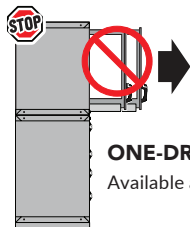
Pale-gray interior for better visibility

**ORGANIZATION**

Front and rear panels with perforations for hanging tools. Optional utility panels and 5S accessories also available

**LOCKS**

Standard lock included on all models. Optional electronic lock and two-user lock also available



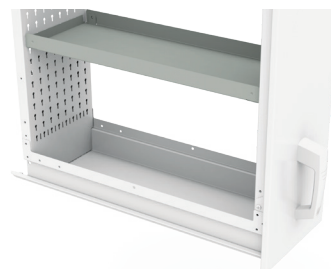
**ONE-DRAWER-AT-A-TIME**

Available as an option



**ADJUSTABLE TRAY**

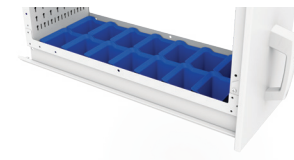
Ideal for storing different tools and products. Easy tool-free repositioning in one inch increments



**PVC DRAWER LINER**



**PLASTIC BINS**



**ERGONOMIC HANDLE**

Comfort-grip handle with integrated drawer lock-in mechanism

**MAGNETIC DIVIDER**

Easy to reposition, front-to-back and left-to-right dividers available



**SECURE**

The R2V cabinet is anchored to the R cabinet below to ensure unit stability

**DID YOU KNOW?**

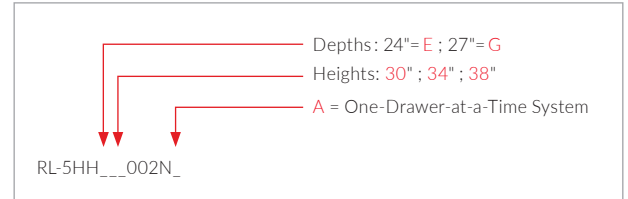
One of Rousseau's biggest strengths is our wide range of color options. Choose from 20 standard colors.



Classic Blue	Avalanche Blue	Everest Blue	Midnight Blue	Glossy Sapphire Blue	Glossy EverGreen	Glossy Yellow	Sienna Orange	Flame Red	Glossy Carmine Red	Glossy Cranberry Red	White	Beige	Frost White	Light Gray	Modern Gray	Charcoal Gray	Glossy Black	Black	Glossy Carbon Black
052	055	051	057	560	1025	208	085	081	806	815	616	041	061	071	745	072	902	091	741

## HERE ARE SOME SOLUTIONS

See more suggested models on [rousseaumetal.com/int\\_en/verticaldrawer](http://rousseaumetal.com/int_en/verticaldrawer)



36" W - 3 drawers

RL-5HE\_\_006N\_



48" W - 6 drawers

RL-5HH\_\_002N\_



60" W - 5 drawers

RL-5HK\_\_006N\_

## CHOOSE THE INTERIOR DESIGN FOR EACH OF YOUR DRAWERS



RLO\_\_-T1001



RLO\_\_-T2001



RLO\_\_-U0C02<sup>1&4</sup>



RLO\_\_-U0S03<sup>2</sup>

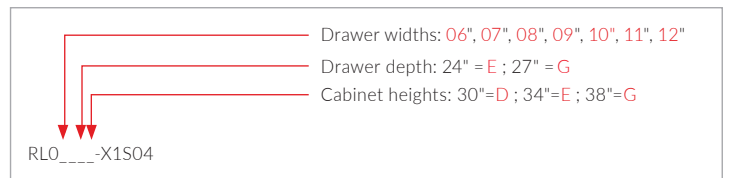


RLO\_\_-X1S04<sup>2</sup>



RLO\_\_-X2C01<sup>1&3</sup>

For more information, contact our representative:



- NOTES: 1: Hook perforations on both sides of the panel.  
 2: Not available for 7"W drawers.  
 3: Available for 10"W drawers and over.  
 4: Panel position is adjustable across the shelf width.

## ROUSSEAU METAL INC.

105, AVENUE DE GASPÉ OUEST  
 SAINT-JEAN-PORT-JOLI (QUÉBEC)  
 G0R 3G0 CANADA  
 WEBSITE  
[rousseau.com](http://rousseau.com)

END USERS  
 1.866.463.4270  
 EMAIL  
[info@rousseau.com](mailto:info@rousseau.com)

DISTRIBUTORS  
 1.800.463.4271  
 DISTRIBUTORS ACCESS  
[e-rousseau.com](http://e-rousseau.com)

